

Office Space For Lease

Greenery Park Office Complex

60 Four Mile Drive, Suite 9 | Kalispell | MT | 59901

\$15.00 PSF

NNN

Contact Stan Converse

CEDARHOUSE
PARTNERS

Buffalo Stage Professional Park
36 Bruyer Way
Kalispell, Montana 59901

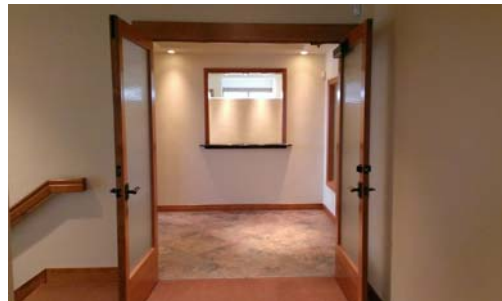
Phone: 406-270-7904

Fax: 800-991-7032

Email: stan@cedarhousepartners.com

Web: www.cedarhousepartners.com

- Four (4) Offices
- Receptionist Area
- Waiting Room
- Conference Area
- Storage Room
- Kitchen Area
- Coat Closet
- Private Bathroom
- 1,722 Square Feet
- NNN's average \$5.30 per square foot per year



One of Kalispell's best business locations, this Class "A" office space located in Greenery Park office complex is now available for lease. Located on Four Mile Drive, this property is close to Hutton Ranch, Flathead Valley Community College and the Kalispell Regional Medical Center with the Kalispell central business district only minutes away. Ample parking and a great location! High quality finishes and move in ready!



REALTOR® **EQUAL HOUSING OPPORTUNITY** **MLS**

It is recommended that all buyers and buyer's agents verify all information. This information is provided by outside sources and deemed reliable, but not guaranteed by listing agents or Cedar House Partners.