

# Commercial Space For Lease

Downtown Kalispell

111 South Main Street | Kalispell | MT | 59901

**\$10.00 PSF**

**Modified**

**Gross**

MLS # 321982

Contact Stan Converse

**CEDARHOUSE**  
PARTNERS

Buffalo Stage Professional Park  
36 Bruyer Way  
Kalispell, Montana 59901

Phone: 406-270-7904

Fax: 800-991-7032

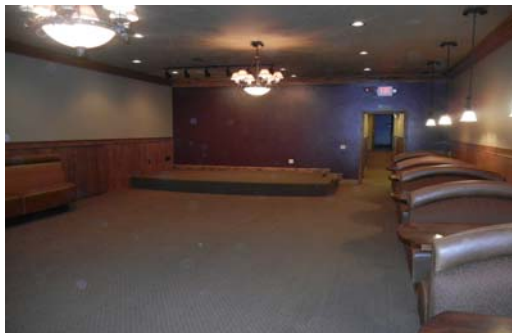
Email: stan@cedarhousepartners.com

Web: www.cedarhousepartners.com

- Large Bar Area
- Built in Commercial Sinks
- Commercial Dishwasher
- Spacious Dining Area
- Storage Room
- Kitchen Area
- Men's & Women's ADA Compliant Bathrooms
- Private Office
- 3,500 +/- Square Feet
- Additional Space Available



The opportunities are endless for this completely remodeled prime retail location in historic downtown Kalispell. The first floor of the historic Duncan building can be used as a restaurant or retail space. Great store front with excellent location. This space was last used as restaurant and is in like new condition. Parking, taxes, property insurance are included in the Modified Gross lease rate.



**REALTOR®**  **MLS**

*It is recommended that all buyers and buyer's agents verify all information. This information is provided by outside sources and deemed reliable, but not guaranteed by listing agents or Cedar House Partners.*